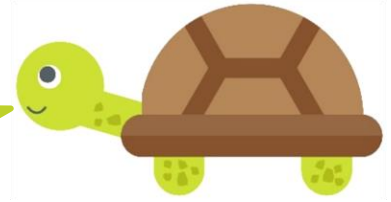


# Caring for catchments

## Learn with Shellby

Lots of activities are happening in catchments. So how do you keep a catchment healthy?



To make sure the water being collected is as clean as possible, it is important to keep a catchment healthy. There are many ways of doing this.

To discover just a few, follow the steps below to build your very own healthy catchment.

Hint! Each picture has a letter, and the matching letter is on your catchment poster.

### Step 1 – Colour the **Pieces for your catchment**

#### Step 2 – Protect the river

- Cut out the fences (A) and glue them onto your catchment

#### Step 3 – Put animals on the land

- Cut out the cow (B) and sheep (C) and glue them onto your catchment

#### Step 4 – Create paddocks

- Cut out the fences (D) and glue them onto your catchment

#### Step 5 – Plant some trees

- Cut out the trees (E) and (F) and glue them onto your catchment

#### Step 6 – Make a lake

- Cut out the dam (G) and glue it onto your catchment

#### Step 7 – Let water flow to the city

- Cut out the pipes (H) and glue them onto your catchment

Name: \_\_\_\_\_

## CONGRATULATIONS!

You have just built your very own healthy catchment.

Healthy catchments collect the best quality water.

1. Why it is important to keep animals in paddocks, away from the riverbanks?

---

---

---

2. Trees help to keep the lake clean. How? [Hint! What's under the ground?](#)

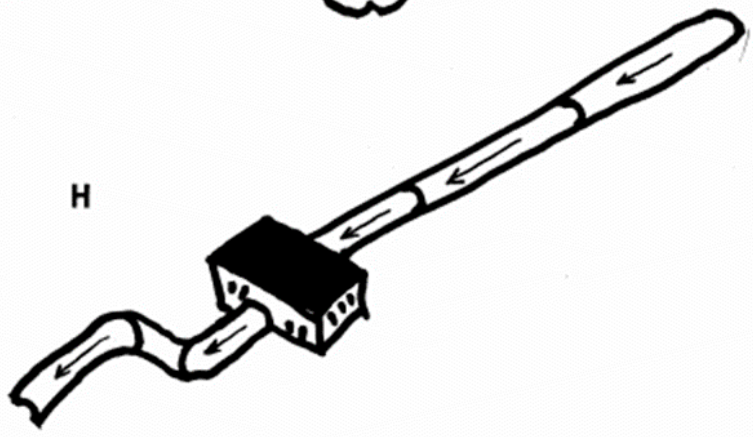
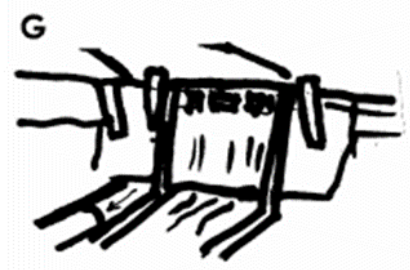
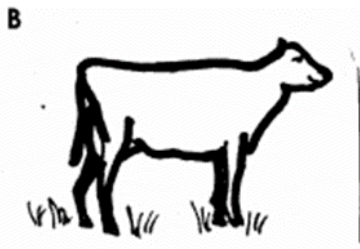
---

---

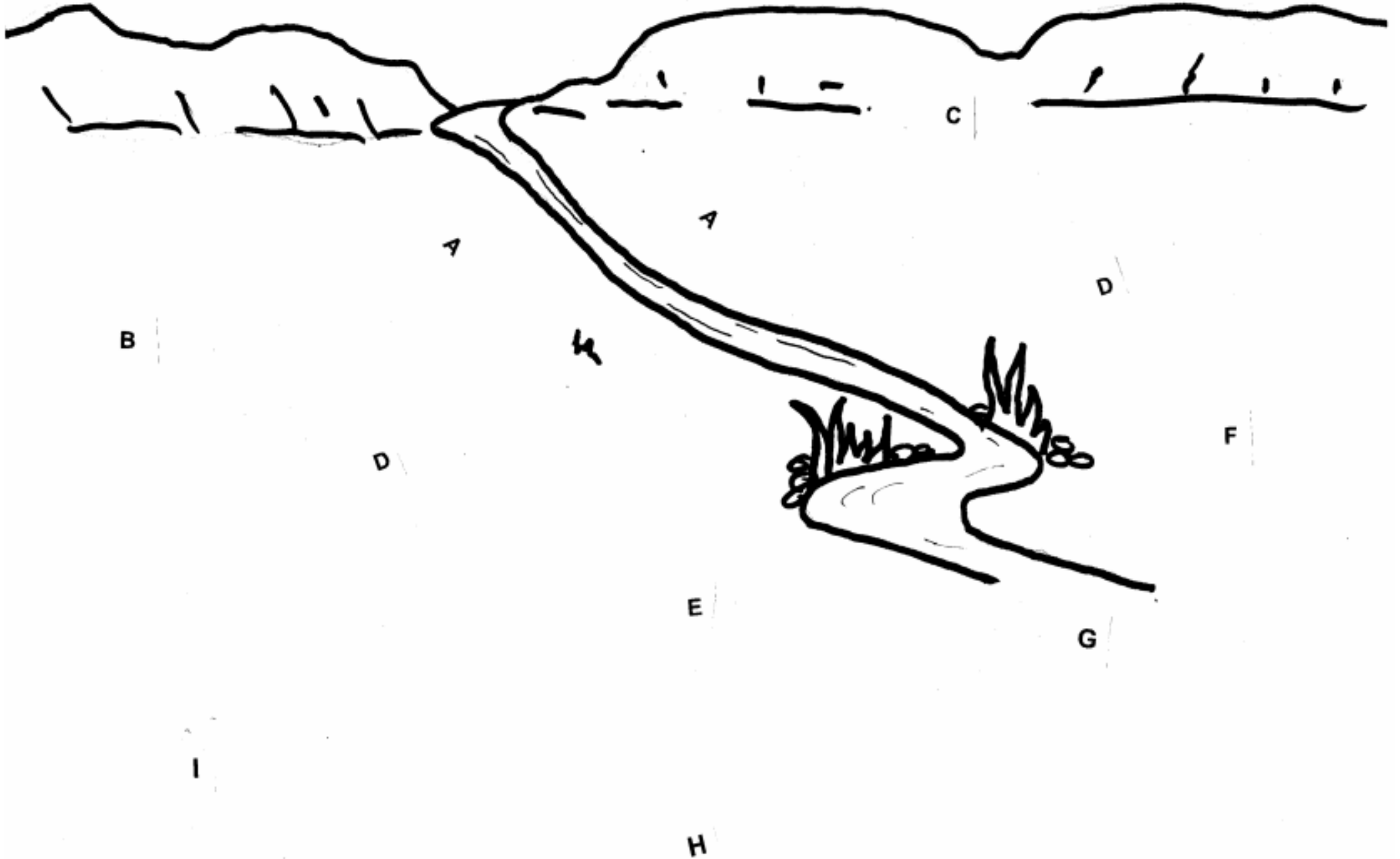
---

3. Why does the city need water? List or draw all of the things people use water for. [Hint! Start by thinking about when you used water today.](#)

# Pieces for your catchment



# Poster: My healthy catchment



Name: \_\_\_\_\_